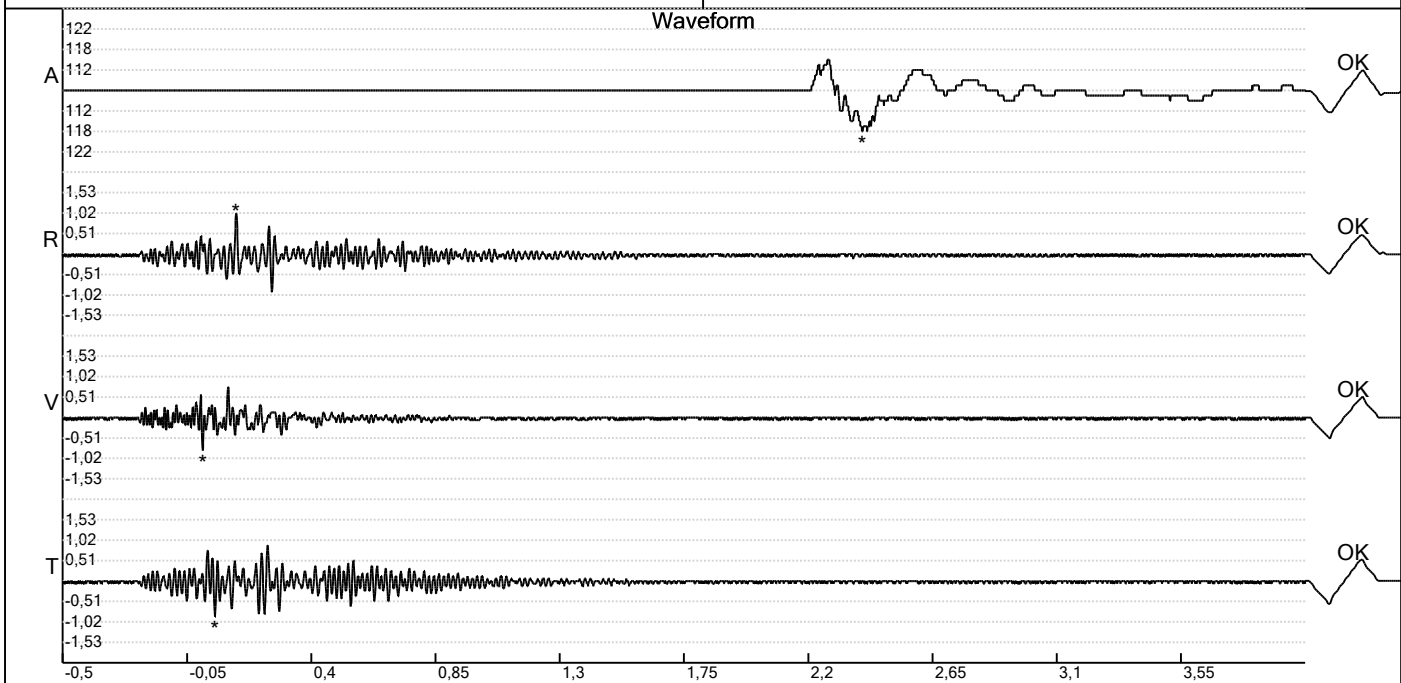


Carrière de BRS
 Oneux -5
 Tir du 24/05/2022
 Sismographe placé au
 261 Halleux
 4710 Comblain-au-Pont

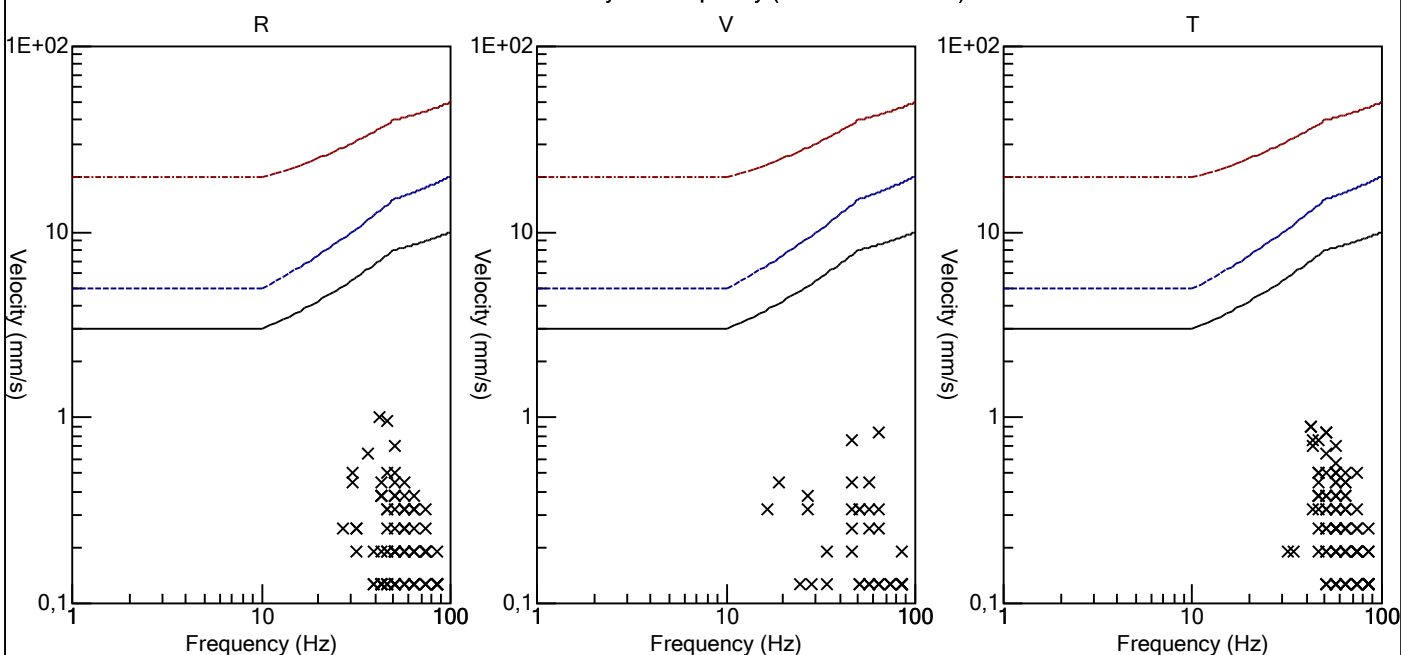
Record: 1789202205241401307.dtb
 Number: 307
 Seismograph: Mini-Seis 1789
 Type of Record: Waveform
 Date: 24-05-22 14:01:00
 Duration: 4,50 Seconds
 Sample Rate: 1024
 Pre-Trigger: 0,5 Seconds
 Seismic Trigger: 0,508 mm/s
 Acoustic Trigger: 142,1 dB
 Seismic Gain: 63,5
 Acoustic Gain: 141,9 dB
 Voltage: 6,5

Peaks and Frequencies
 PPV Maximum (Geo #1): 1,02 mm/s
 Acoustic #1: 118,1 dB @ 2,5 Hz (2,394531 s)
 Radial #1: 1,02 mm/s @ 42,6 Hz (0,1279297 s)
 Vertical #1: 0,826 mm/s @ 64,0 Hz (0,006835938 s)
 Transverse #1: 0,889 mm/s @ 42,6 Hz (0,05078125 s)
 Last Calibration Date: 03-12-21

Graph Information
 Time Range: -0,5 s to 4 s, Intervals: 0,4500 Seconds



Velocity vs. Frequency (DIN 4150-3 Tab 1)

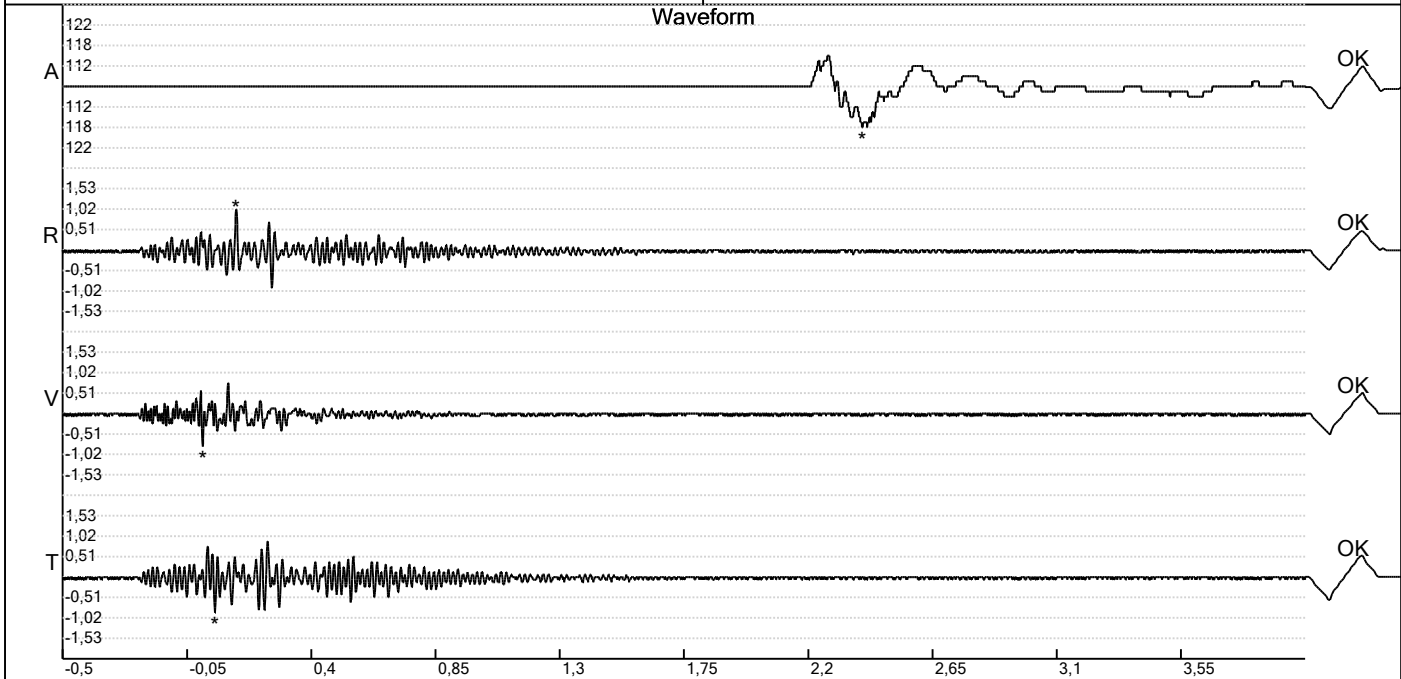


Carrière de BRS
 Oneux -5
 Tir du 24/05/2022
 Sismographe placé au
 261 Halleux
 4710 Comblain-au-Pont

Record: 1789202205241401307.dtb
 Number: 307
 Seismograph: Mini-Seis 1789
 Type of Record: Waveform
 Date: 24-05-22 14:01:00
 Duration: 4,50 Seconds
 Sample Rate: 1024
 Pre-Trigger: 0,5 Seconds
 Seismic Trigger: 0,508 mm/s
 Acoustic Trigger: 142,1 dB
 Seismic Gain: 63,5
 Acoustic Gain: 141,9 dB
 Voltage: 6,5

Peaks and Frequencies
 PPV Maximum (Geo #1): 1,02 mm/s
 Acoustic #1: 118,1 dB @ 2,5 Hz (2,394531 s)
 Radial #1: 1,02 mm/s @ 42,6 Hz (0,1279297 s)
 Vertical #1: 0,826 mm/s @ 64,0 Hz (0,006835938 s)
 Transverse #1: 0,889 mm/s @ 42,6 Hz (0,05078125 s)
 Last Calibration Date: 03-12-21

Graph Information
 Time Range: -0,5 s to 4 s, Intervals: 0,4500 Seconds



Fast Fourier Transform (Amplitude Spectrum)

